

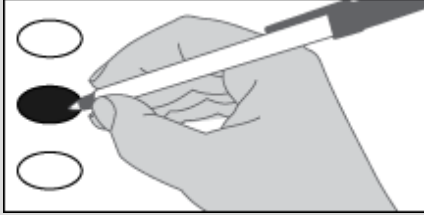


Official Ballot
Primary Election
Benton County, Washington
August 4, 2026

split.name

Instructions

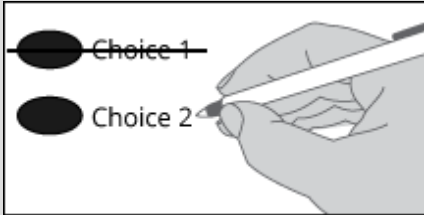
How to vote



Use a dark blue or black ink pen to completely fill in the oval next to your choice.

Vote for one in each race or measure. If you vote for more than one, no votes will be counted for that race or measure.

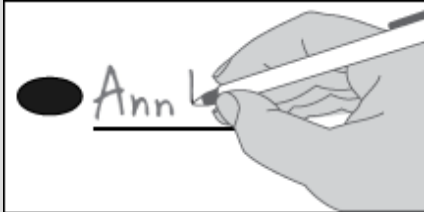
How to correct a mistake



To make a correction, draw a line through the entire choice.

You then have the option of making a different choice by completely filling in another oval.

Optional Write-In



To vote for a candidate not listed for that race, fill in the oval to the left of the "Write-In" and print the name on the line.

How to Return Your Ballot

Insert ballot into security sleeve. Insert security sleeve into the ballot return envelope.

Sign and date the voter declaration using the instructions on the return envelope.

Who Donates to Campaigns?

View information on financial contributors for federal candidates: Federal Election Commission www.fec.gov Toll Free 1 (800) 424-9530

View financial contributors for state and local candidates and measures: Public Disclosure Commission www.pdc.wa.gov Toll Free 1 (877) 601-2828

READ: Each candidate for partisan office may state a political party that the candidate prefers. A candidate's preference does not imply that the candidate is nominated or endorsed by the party, or that the party approves of or associates with that candidate.

Federal Office Partisan Office

Congressional District 4 U.S. Representative

- Jacke "Jack" Kobiesa (States No Party Preference)
Amanda McKinney (Prefers Republican Party)
John Duresky (Prefers Democratic Party)
John C. Hughs (Prefers Republican Party)
Favian Valencia (Prefers Independent Party)
Jerrod Sessler (Prefers Republican Party)
Devin Poore (Prefers Cascade Party)
Ken Vaz (Prefers Republican Party)
Zac Rossi (States No Party Preference)
Elpidia Saavedra (Prefers Republican Party)
Matt Boehnke (Prefers Republican Party)
Write-In

Legislative Offices Partisan Offices

Legislative District 8 State Senator

- Gabe Galbraith (Prefers Republican Party)
Nikki Torres (Prefers Republican Party)
Write-In

Legislative District 8 State Representative Pos. 1

- Stephanie Barnard (Prefers Republican Party)
Write-In

Legislative District 8 State Representative Pos. 2

- April Connors (Prefers Republican Party)
Write-In

Legislative District 14 State Representative Pos. 1

- Chelsea Dimas (Prefers Democratic Party)
William Chichenoff (States No Party Preference)
Gloria Mendoza (Prefers Republican Party)
Write-In

Legislative District 14 State Representative Pos. 2

- Deb Manjarrez (Prefers Republican Party)
Tony G Sandoval (Prefers Democrat Party)
Ezequiel Morfin (Prefers Democratic Party)
Write-In

Legislative District 15 State Senator

- Jeremie Dufault (Prefers Republican Party)
Write-In

Legislative District 15 State Representative Pos. 1

- Chris Corry (Prefers Republican Party)
Jack McEntire (Prefers Democratic Party)
Write-In

Legislative District 15 State Representative Pos. 2

- Reedy Berg (Prefers Republican Party)
Chase Foster (Prefers Republican Party)
Liz Hallock (Prefers No Kings Party)
Write-In

Legislative District 16 State Representative Pos. 1

- Mark Klicker (Prefers Republican Party)
Kyle Palmer (Prefers Democratic Party)
Write-In

Legislative District 16 State Representative Pos. 2

- Skyler Rude (Prefers Republican Party)
Derek Sarley (Prefers Democratic Party)
Write-In

County Offices Partisan Offices

Benton County Assessor

- Bill Spencer (Prefers Republican Party)
Write-In

Benton County Auditor

- Brenda Chilton (Prefers Republican Party)
Write-In

Benton County Clerk

- Josie Delvin (Prefers Republican Party)
Write-In

Please Vote Both Sides

Benton County
Commissioner District 2

Michael Alvarez
(Prefers Republican Party)

Write-In

Benton County
Coroner

William "Bill" Leach
(Prefers Republican Party)

Write-In

Benton County
Prosecuting Attorney

Julie Long
(Prefers Republican Party)

Eric Eisinger
(Prefers Republican Party)

Write-In

Benton County
Sheriff
4 Year Short & Full Term

Brad Klippert
(Prefers Republican Party)

Michael (Mike) Clark
(Prefers Republican Party)

Write-In

Benton County
Treasurer

Kenneth Spencer Jr.
(Prefers Republican Party)

Write-In

**Judicial Offices
Nonpartisan Offices**

Washington State
Supreme Court
Justice Position 1
2 Year Unexpired Term

Colleen Melody

Laura Christensen Colberg

Scott Edwards

Write-In

Washington State
Supreme Court
Justice Position 3

Jaime Michelle Hawk

David Stevens

Mike Diaz

Write-In

Washington State
Supreme Court
Justice Position 5
2 Year Unexpired Term

Greg Miller

Theo Angelis

Dave Larson

Sharonda Amamilo

Write-In

Washington State
Supreme Court
Justice Position 7

David R Shelvey

Debra L. Stephens

Karim A. Merchant

Todd A. Bloom

Write-In

**City Office
Nonpartisan Office**

City of Richland
Council Pos. 4
3 Year Unexpired Term

Kyle Saltz

Mary S. Lipton

Ragan Faylor

David Tveraas

Todd Samuel

Write-In

Local Measure

PROPOSITION NO. 1

BENTON COUNTY FIRE PROTECTION DISTRICT #4

The Board of Benton County Fire Protection District No. 4 adopted Resolution No. 2026-05 concerning a proposition to maintain and adequately fund District operations.

This proposition would fund fire protection and emergency medical services by restoring the District's existing regular property tax levy in 2026 to an amount not to exceed \$1.50 per \$1,000.00 of assessed valuation and authorize setting a limit factor of 106% for each of the following nine years. The maximum allowable levy in the final year shall serve as the base for subsequent levy limitations as provided by Chapter 84.55 RCW.

Should this proposition be:

Approved

Rejected

PROPOSITION NO. 1

BENTON COUNTY FIRE PROTECTION DISTRICT NO. 6

Emergency Medical Services Property Tax Levy

Will Benton County Fire Protection District No. 6 be authorized to fund emergency medical services for its citizens by reestablishing a regular property tax levy of \$.50 or less per \$1,000.00 of assessed valuation for a period of ten consecutive years to be collected beginning in 2027?

Yes

No